

PROJECT OF THE YEAR | COMMERCIAL SERVICE AIRPORT

Cargo Hangar Development

Airport Sponsor:

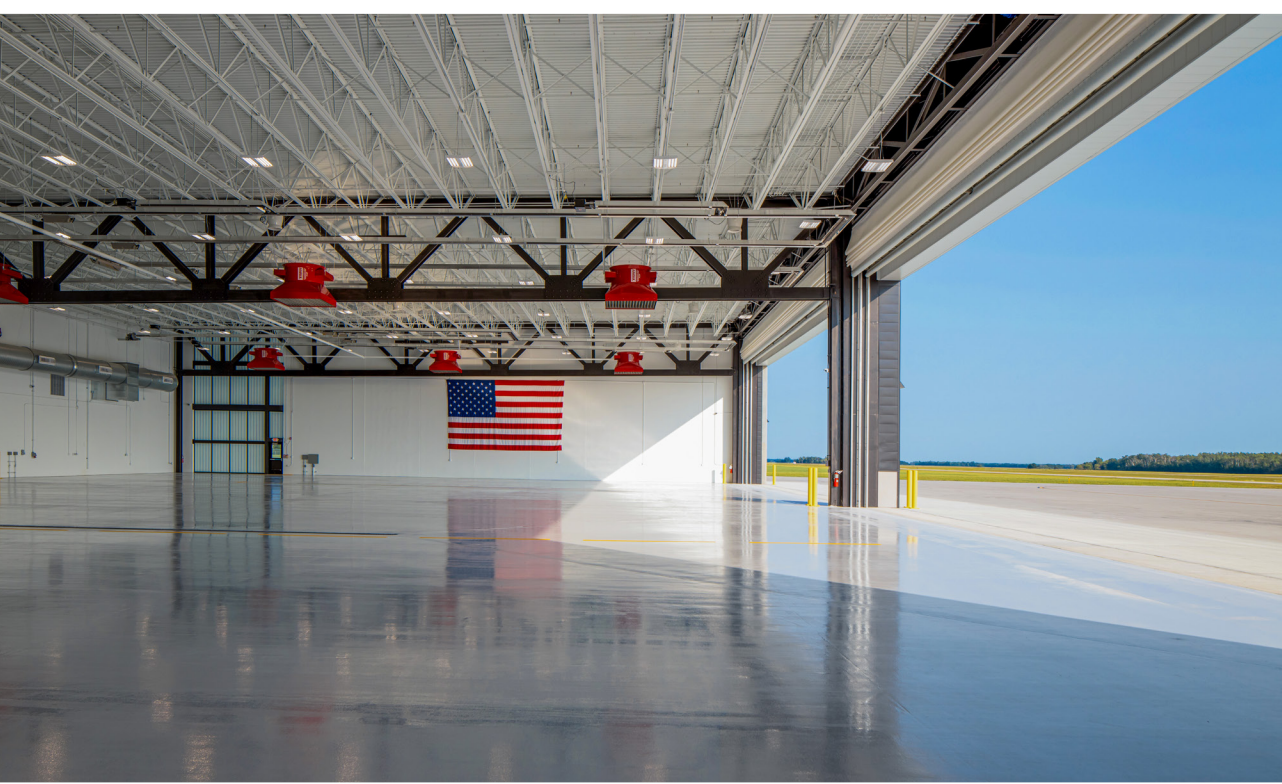
Thief River Falls Regional Airport

Consultant Team:

SEH – Prime Consultant
Miller Dunwiddie

Construction Manager:

H+U Construction



The entire facility was designed with sustainability in mind, exceeding state energy efficiency requirements.



The Megadoors are a key design feature for the facility. The translucency of the dual layer fabric demonstrates an innovative design that provides superb functionality and long-term reliability.



An aerial view of the new cargo hangar and apron, along with the new apron edge lighting. The apron was completed with a separate 100% funded FAA grant. The building design aesthetics are visible with the exterior concrete wall panels designed to mimic the agriculture rich area as seen from the sky.

About the Project

The Thief River Falls Regional Airport (TVF) is a vital transportation hub in northwestern Minnesota, supporting commercial air service and a rapidly expanding cargo operation. With major logistics players such as FedEx, UPS, and DHL increasing their presence, TVF launched the Cargo Hangar Development Project to enhance efficiency, expand capacity, and sustain the region's economic growth. The newly constructed hangar and apron improvements streamline cargo movement, ensuring businesses like Digi-Key Electronics, Polaris, and Arctic Cat can meet rising shipment demands. Designed with scalability in mind, the facility is future-ready, allowing for additional aircraft bays as needs evolve.

Securing funding for the project required a strategic approach, leveraging federal and state resources to minimize local financial strain. TVF secured \$7.5 million in federal funding through the Congressionally Directed Spending Program, while the State of Minnesota contributed \$8.5 million through multiple bonding rounds. Additional CARES Act and Minnesota Department of Transportation funding helped cover infrastructure costs, ensuring the project remained on track despite economic challenges.

Beyond improving air transportation, this project is a strategic investment in the local economy and workforce. Expanding cargo capabilities, it fosters job creation, strengthens the logistics network, and enhances regional business opportunities. Sustainability was also a key focus, with energy-efficient systems, stormwater improvements, and cutting-edge infrastructure aligning with Minnesota's environmental standards. Through strong stakeholder collaboration, innovative design, and strategic funding efforts, the project positions TVF as a premier logistics hub, ready to support Minnesota's growing transportation needs.

FOR MORE INFORMATION ABOUT THIS PROJECT CONTACT:

Tim Wegwerth, PE (MN, WI)
Project Manager
twegwerth@sehinc.com

Ariel Christenson, PE (MN, IN, NC, TX, VA, WI)
Project Manager
achristenson@sehinc.com

AIRPORT CONTACT:

Joe Hedrick
Airport Manager
Thief River Falls Regional Airport

