

PROJECT OF THE YEAR | OUTSTANDING LEADERSHIP IN AIRPORT PLANNING, ENVIRONMENTAL, AND STRATEGIC INITIATIVE

# Airport Traffic Control Tower (ATCT) Site Selection Study and Environmental Assessment

**Airport Sponsor:** Mankato Regional Airport  
**Consultant Team:** TKDA – Prime Consultant  
SEH

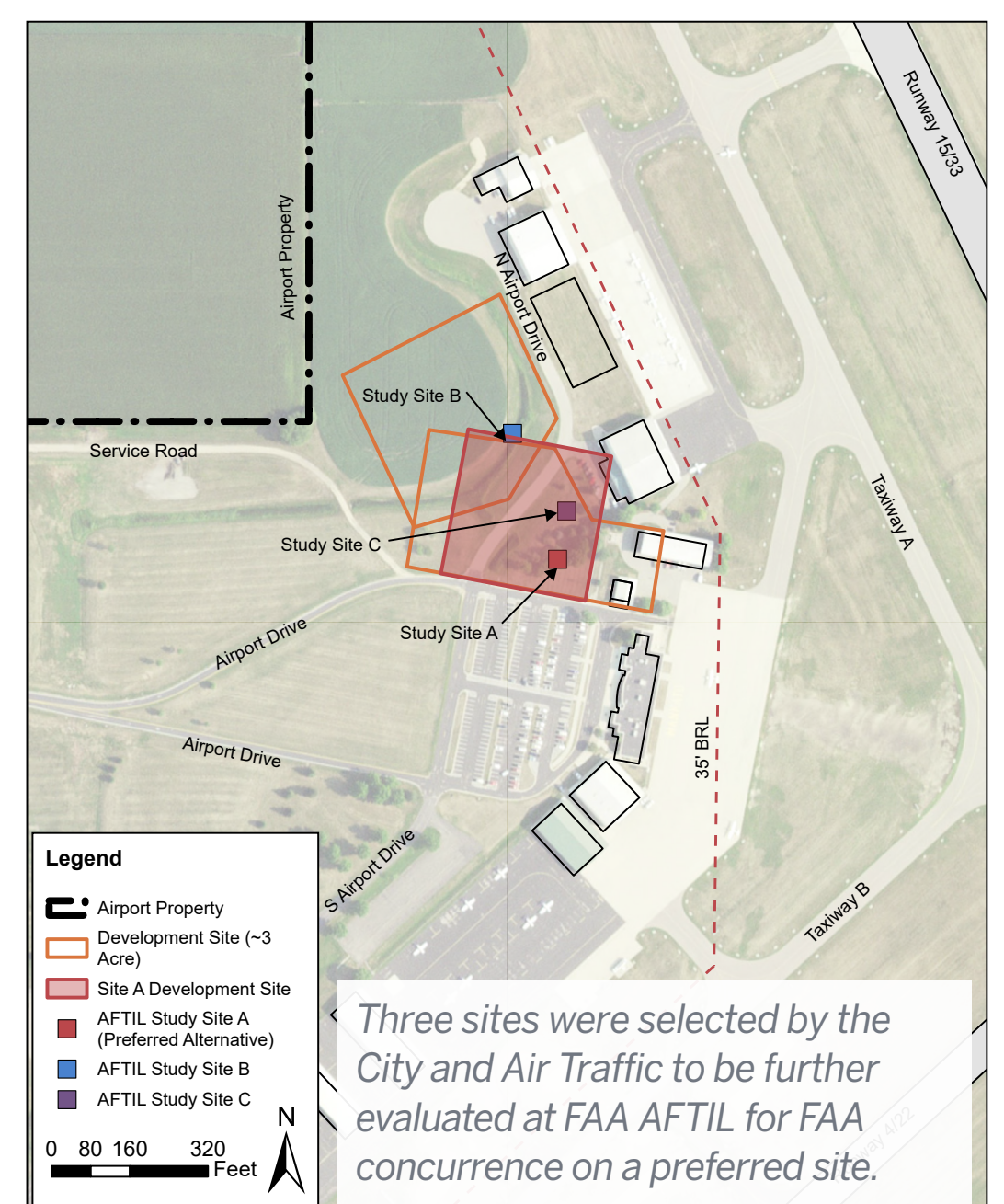
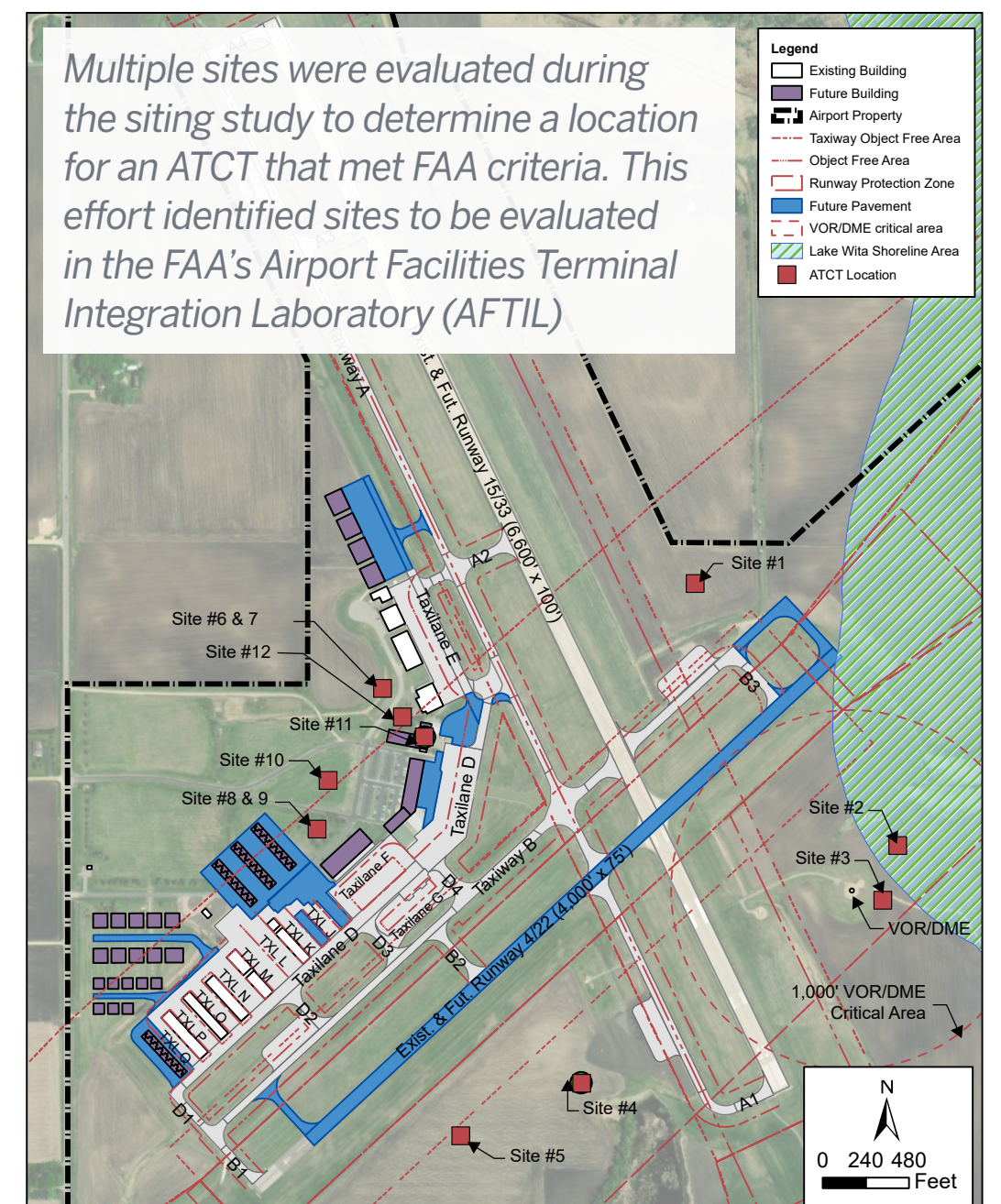
## About the Project

The Mankato Regional Airport (MKT) was selected to enter the Federal Contract Airport Traffic Control Tower (ATCT) on April 19, 2022, to support significant levels of general aviation operations, driven by the Minnesota State University-Mankato flight training program. Following selection into the program, the airport has completed the needed planning and environmental processes to prepare design and construction of this strategic project. **MKT is constantly ranked as one of the busiest airports by operations in the State.**

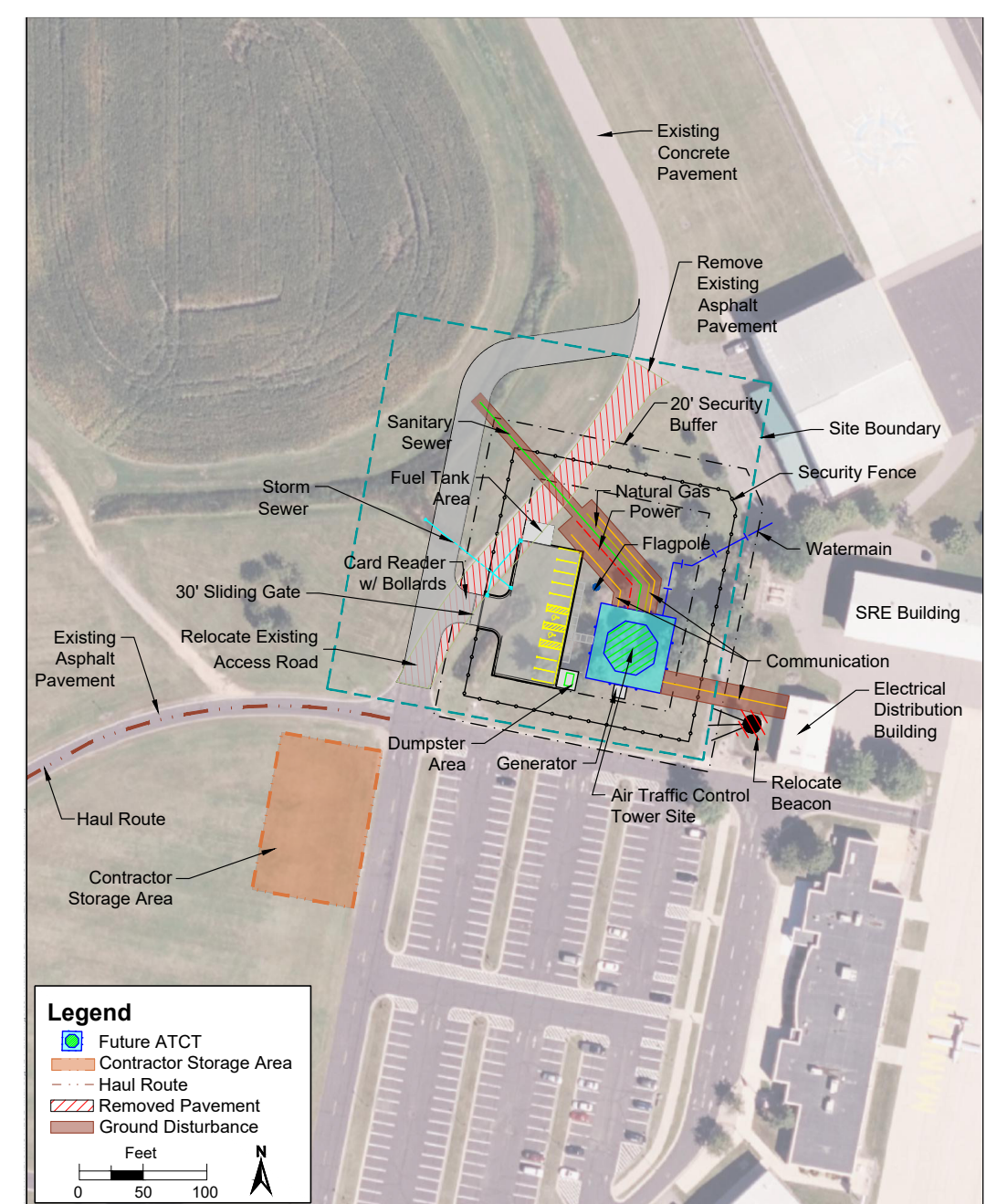
The project involved a comprehensive siting study to determine the optimal location for the new tower, ensuring compliance with FAA regulations while minimizing environmental impacts to the surrounding area. During the siting process, SEH evaluated 15 alternatives and narrowed them down to four preferred sites for FAA evaluation at the Airport Facilities Terminal Integration Laboratory (AFTIL). Preliminary design was completed by TKDA during the siting study to help inform the NEPA review. Preliminary environmental review, including a Phase I and Phase II Environmental Site Assessment (ESA) was also completed during the siting study to expedite the collection of information needed for the Environmental Assessment.

The collaborative efforts of the City of Mankato, TKDA and SEH were crucial in completing the siting study, which included elements such as public and agency participation and the completion of a focused Environmental Assessment (EA). The ATCT must be constructed by April 2027 which required the project team to be efficient with the scope of work and project deadlines.

This project highlights MKT's commitment to strategic growth and environmental stewardship. The airport's role as a flight training hub and business center underscores its importance in the region. The successful completion of the ATCT siting and environmental assessment, positions MKT as a deserving candidate for the MCOA Award for Outstanding Leadership in Airport Planning, Environmental, and Strategic Initiative.



A simulated visualization from FAA AFTIL of the preferred site for the new air traffic control tower at MKT.



During AFTIL, Site 15 was identified, and further evaluated as being a viable option that supports long-term growth at the airport and meets FAA criteria for siting an ATCT. This graphic shows the preliminary site design for the ATCT and will be refined during the final design efforts.

### FOR MORE INFORMATION ABOUT THIS PROJECT CONTACT:

**Matt Stewart, C.M., ACE**  
SEH  
Aviation Planner,  
Project Manager  
mstewart@sehinc.com

**John Peterson, PE**  
TKDA  
Market Manager /Senior  
Registered Engineer  
john.peterson@tkda.com

### AIRPORT CONTACT:

**Shawn Schloesser**  
City of Mankato  
Associate Director,  
Transportation Planning Services

