

PROJECT OF THE YEAR | INTERMEDIATE LARGE GA AIRPORT

Runway and Taxiway Reconstruction Cambridge Municipal Airport

Airport Sponsor:

City of Cambridge

Consultant Team:

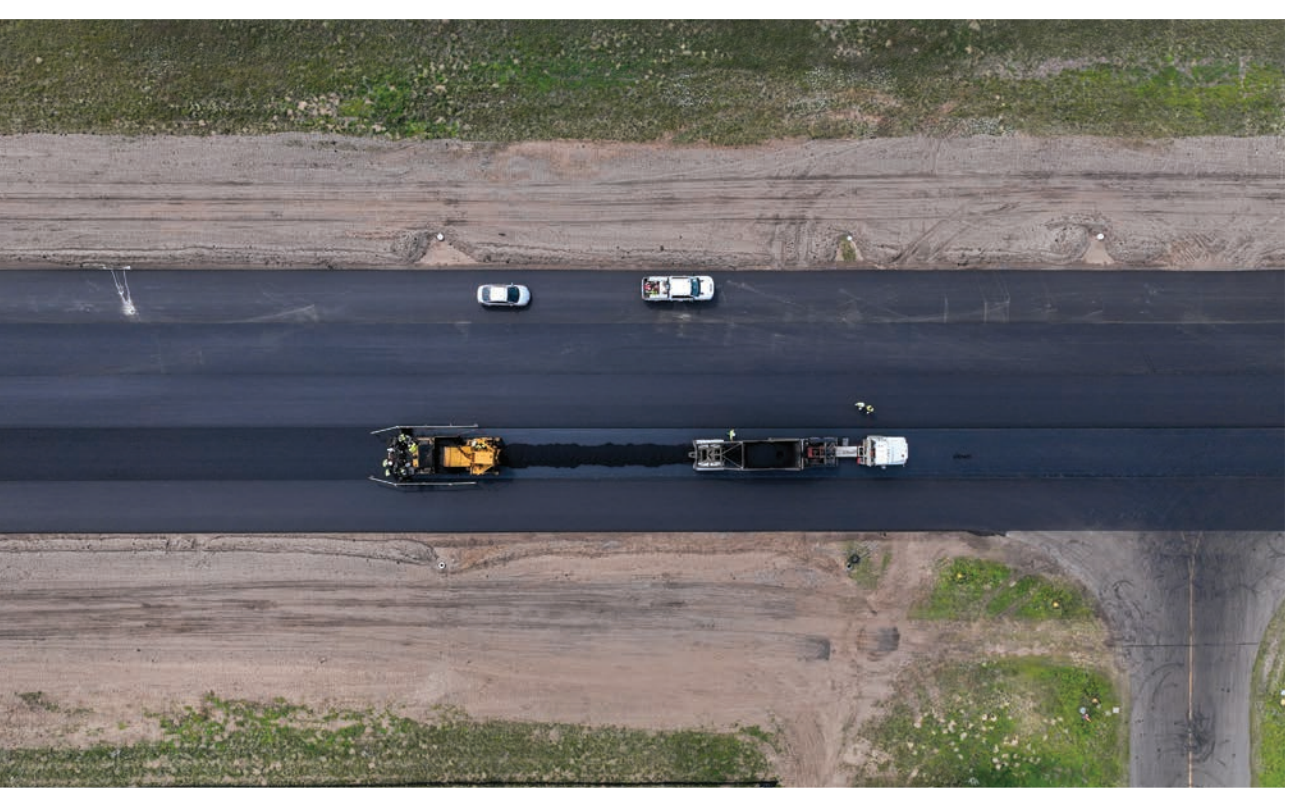
SEH – Prime Consultant
Braun Interotec
Barr Engineering

Contractor:

Minnesota Paving & Materials
Kraemer Trucking & Excavating
SCS Electric



The project included the addition of a taxiway turnaround to the Runway 34 end, enhancing traffic flow and safety.



The project included nearly 8,000 tons of bituminous paving.



The project included a brand new runway lighting system with state-of-the-art LED equipment.

About the Project

The key purpose of this project was to reconstruct Runway 16/34 at the Cambridge Municipal Airport. With the pavement and lighting system at the end of its useful life, the City needed to formulate a project that would provide new runway infrastructure with the least amount of impacts to the airfield's users.

To deliver the project, the City of Cambridge partnered with SEH to plan a project to replace the critical airport infrastructure in just four weeks. The project team selected a full-depth reclamation construction method for the runway, allowing for the fast-paced construction. The project included new bituminous pavement, markings, LED edge lighting, drainage features, and a new taxiway turnaround on the south end of the runway.

SEH worked with the City to lead the communication and coordination between the project stakeholders, including the FAA, MnDOT, airport users, and tenants. This included robust public engagements efforts to communicate project impacts and construction schedule.

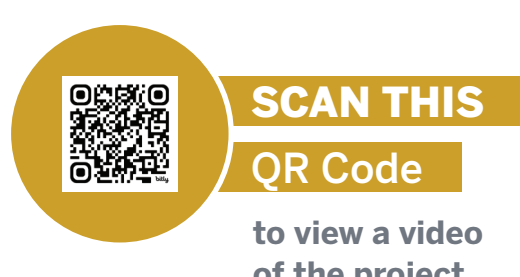
The new runway and taxiway infrastructure is now complete and ready to serve the City of Cambridge and larger general aviation community for years to come.

FOR MORE INFORMATION ABOUT THIS PROJECT CONTACT:

Lindsay Reidt PE (MN)
Project Manager
lreidt@sehinc.com

AIRPORT CONTACT:

Lucas Milz
Airport Manager



SCAN THIS

QR Code

to view a video
of the project

